



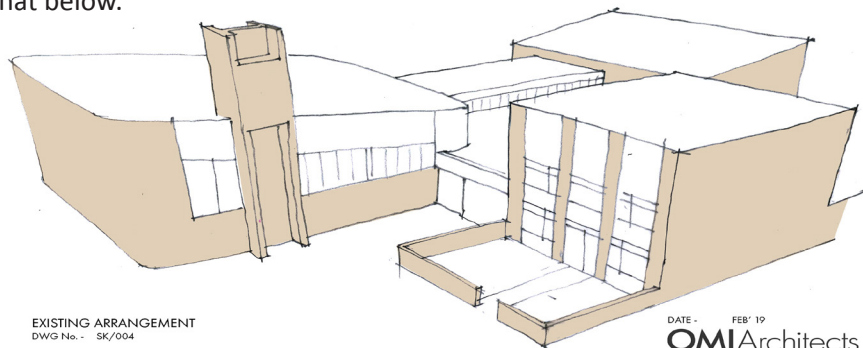
May 2019

Dear friends and supporters

## Brunswick Church Refurb... Phase One... part 2: Spade in the Ground

Welcome to our first Refurb update for 2019. Things have been progressing and we are now in a crucial stage which could, if a few things come together (pause for fanfare), lead to Actual Building Work before the end of the year! More on all that below.

We have been doing some reflecting and praying around the vision for Refurb to give us a higher, or spiritual, concept to lean on and give us perspective for what is an ambitious project for a small inner-city church.



We feel like we are embarking, like Abraham\* in the Bible, on a

journey into the unknown and very much 'having a go' in faith at a big vision we think God has given us. Not as a thing in itself to make us look good, but as a means towards Brunswick's wider and ongoing vision of John 10:10 'life in all its fullness' for our community, which is in the bottom few percent in just about all of the indices of multiple deprivation, particularly health. Humanly-speaking it is unrealistic for a church our size. We might fail, but there's only one way to find out (and if we do fail we will only be guilty of trying to do what we felt God was asking of us). Whether we fail or succeed, our vision for the well-being/shalom of this area will continue, and God will continue to love us and our community 100%..

Since December...

- Planning Permission from the Council was approved on time on Monday 7th January
- DAC (Diocesan Advisory Committee) approval was given on 4th March for all of Phase 1. This took several months longer than anticipated and has set subsequent steps back somewhat.
- RIBA stage 4 (drawings prepared for tender) initiated on 24th April.

Next is the tendering phase where we get quotes for the Actual Building Work. We are still hopeful, despite the delays, of this starting this year. That of course depends on the fund-raising stage. However these things take, time, effort and lots of information which we are in process of gathering. A group has been meeting fortnightly since March.

Also, as noted in December, as a fellowship we had already committed our Building Reserve – plus some generous donations from a few individuals – to getting Refurb to this point: a bit of a step of faith, as the total budget for Phase One\*\* is expected to be about £400,000. As a further step of faith we have committed most of our remaining reserves to this, which still leaves £260,000 to be found.

We are proposing a formal "gift period" in the Autumn where we will explicitly ask church members to give specifically towards Phase One. We will also be inviting donations from others (stakeholders such as the other groups who use the building), the local community, local businesses... and you, our ex-members.

If you feel able to help, please get in touch. For several of you who have been in contact already asking for numbers, the total is right there in the previous paragraph! If you'd like a breakdown of how this is made up (e.g. how much will the new heating cost), we can supply that.

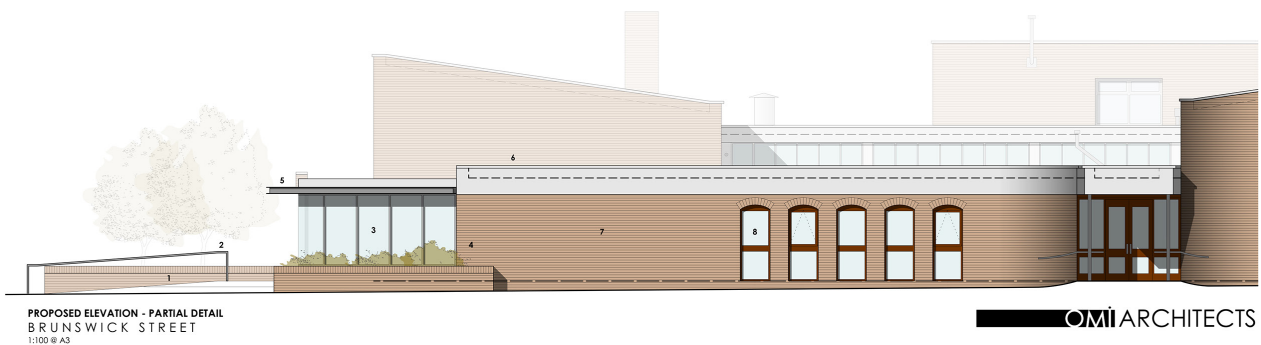
Whether or not you can help financially, we would ask you to stand with us in prayer for the Refurb project and its part in our overarching vision and mission to be conduits of God's love and his desire for 'life in all its fullness' for all in this place. This is probably the biggest thing any of us have ever taken on, and it encourages us hugely, especially in those "What are we DOING?" moments, to know there are people cheering us on from the sidelines. So feel free to send us uplifting messages anytime!\*\*\*

If you're local, or in the area, please pop in for a chat and a look at our Refurb displays. It was great to welcome an ex-Brunswickian visiting from Singapore in December! If not, have a look at the Refurb page on our website ([www.brunswickchurch.org.uk](http://www.brunswickchurch.org.uk)) which gives more details.

And, as before, if you can help in any other way at all – advice, experience, practical – please get in touch.

We hope to have some more news soon. Until then thank you again for being with us on this Refurb journey.

*The Congregation of Christchurch Brunswick*



\* By an act of faith, Abraham said yes to God's call to travel to an unknown place that would become his home. When he left he had no idea where he was going. (Hebrews 11:8. The Message)

\*\* Phase One of Refurb consists of new heating and the work on the hall. This would mean we can use the hall for church and other meetings while subsequent work is going on in the rest of the building:

- New replacement boiler(s). For some of you of a certain age from the church congregation you will know the significance of this decision!
- New heating in hall and worship room.
- New Insulated hall roof.
- New hall ('Youth') entrance.
- Additional new toilets off the hall.
- Revised car park.
- Beginnings of new church garden.
- Additional storage.



Sketches/plans available for perusal if you're interested.

\*\*\* [✉ refurb@brunswickchurch.org.uk](mailto:refurb@brunswickchurch.org.uk) [🐦 @brunswickmcr](https://twitter.com/brunswickmcr) [f brunswickchurchmcr](https://www.facebook.com/brunswickchurchmcr)